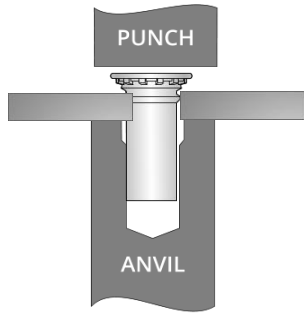
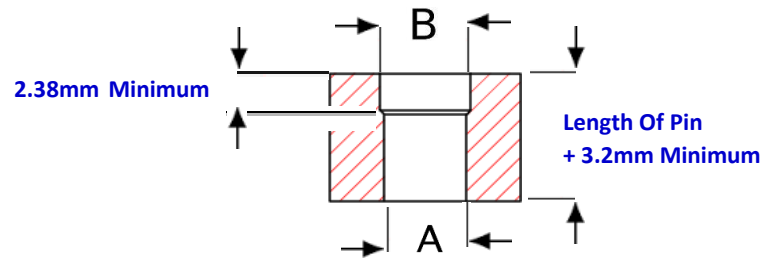
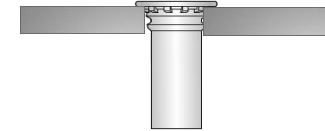
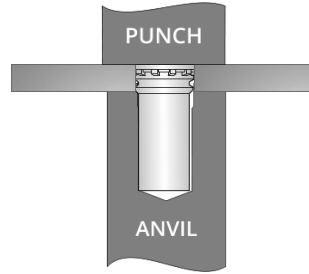


# Self Clinch Flush Head Pin Installation Guide

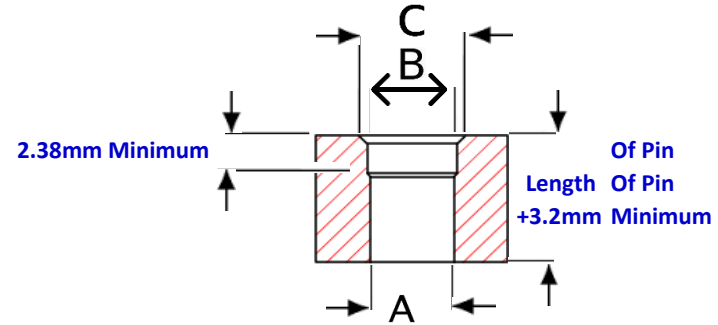
Punch Or Drill Correct Hole Size.  
Place The Fastener In The Prepared Hole In The Panel And Locate The Fastener In The Anvil  
Ensure That The Appropriate Anvil Type Is Used For The Panel Thickness Like In The Diagrams.



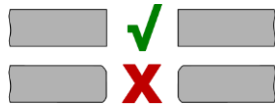
With The Panel Held Level Apply A Squeezing Force Until The Head Is Installed Flush To The Panel Do Not Over Squeeze The Fastener In The Panel. This Could Result In Panel Deformation.



Hole Style Anvil For 1.53mm And Over Panel Thickness

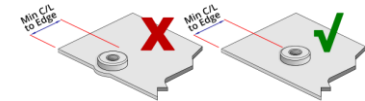


90 Degree Countersunk Hole Style Anvil For 1.52mm Or Less



Do Not Remove Any Extra Material OR Chanfer The Hole This Could Result In Improper Installation Or Reduce Performance

Anvil Dimensions			
Pin Dia	A	B	C
3mm	+0.05	+0.05	+0.10
4mm	4.10	4.19	5.44
5mm	5.10	5.61	6.93



Ensure Attention Is Paid To The Minimum Hole Centreline To Edge Dimension For Each Fastener Minimum Centreline To Edge Dimensions Shown For Each Fastener Apply To One Edge Only If This Distance Is Applied To Multiple Sides There Will Be Panel Distortion Unless Panel Are Supported During Installation